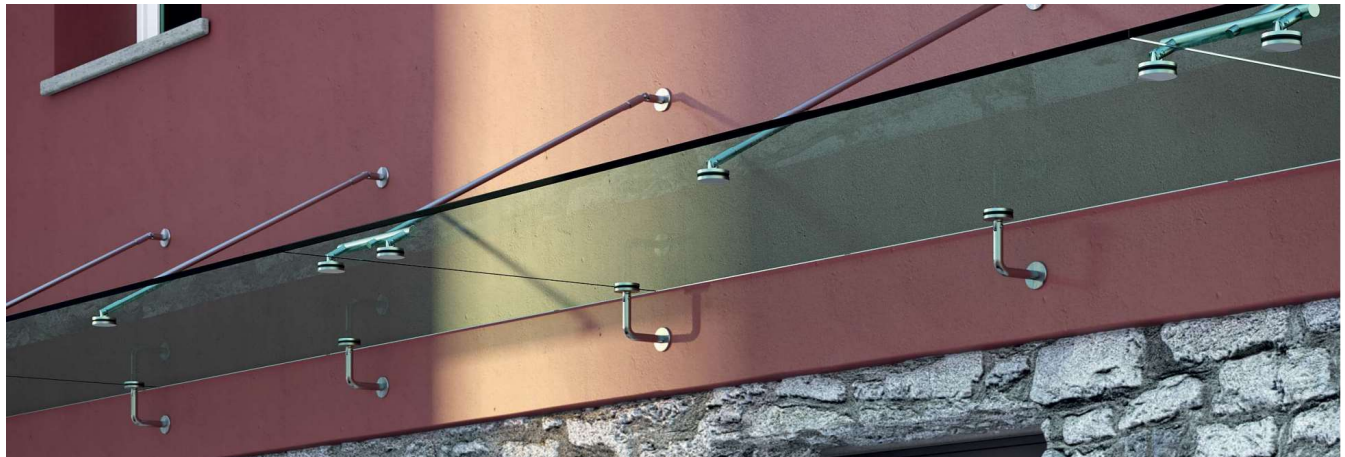


## GLASS SYSTEMS

# SYSTEM TYPE: GLASS CANOPY

## CANOPY MODEL1



### 1. SYSTEM FEATURES

- extremely simple design and constructional concept;
- an elegant, beautiful, and inspiring look;
- guaranteed stability and strength;
- quick and easy installation;
- the products have passed the tests necessary to ensure its resistance to snow, wind and other safety factors as required by European standards;

### 2. TECHNICAL DATA

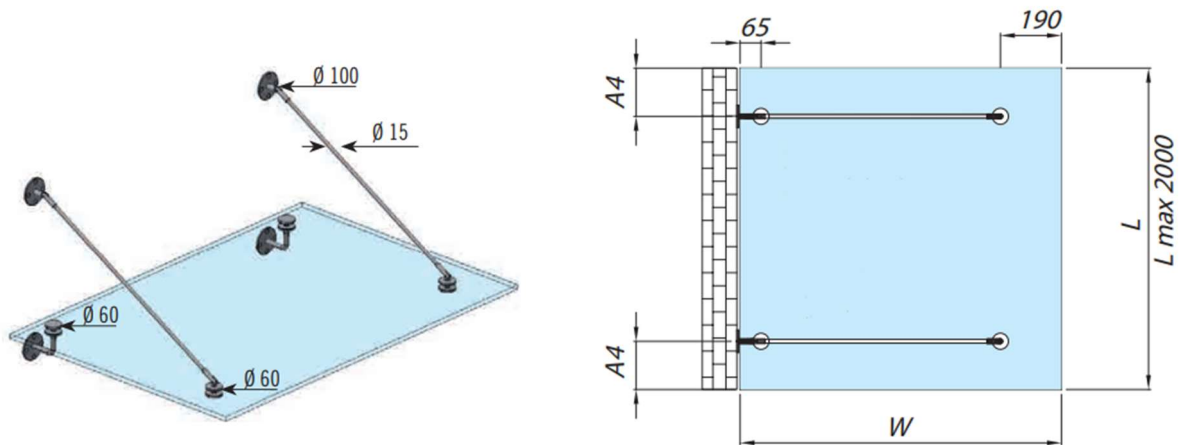
- Designed for: domestic use and public places
- Use: outside, also by the sea,☼
- Variants: wall fixing with flange or threaded bar
- Applications: above the entrances, stairs, balconies
- Material: AISI 316 steel
- Infill: glass from 17.52 to 25.52 mm
- Upper finish: satin

### 3. CERTIFICATION. TESTS

- Glass EN12600;
- EN 1991-1-3;
- CE

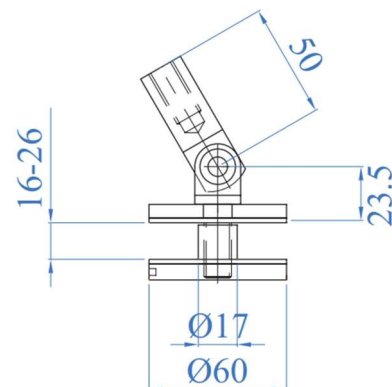
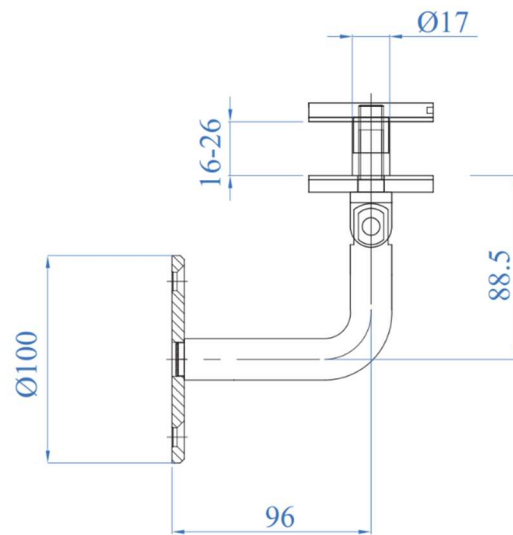
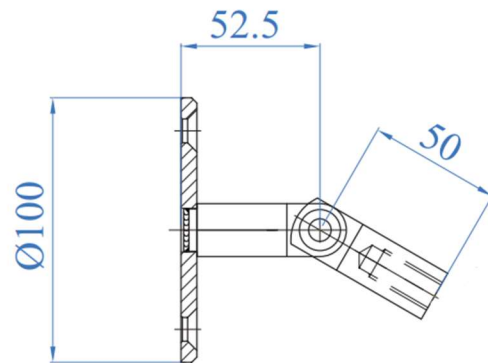


### 4. GLASS CANOPY MODEL 1



Glass characteristics	L	W
17.52mm (88.4)	max 2000 mm	1000 mm
21.52mm (1010.4)	max 2000 mm	1000 mm
25.52mm (1212.4)	max 2000 mm	1000 mm
21.52mm (1010.4)	max 2000 mm	1500 mm
25.52mm (1212.4)	max 2000 mm	1500 mm

## 5. GLASS CANOPY MODEL 1 ACCESSORIES



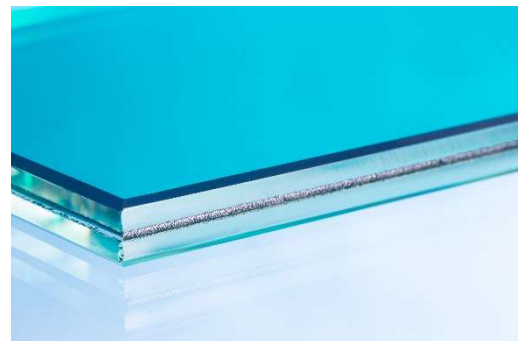
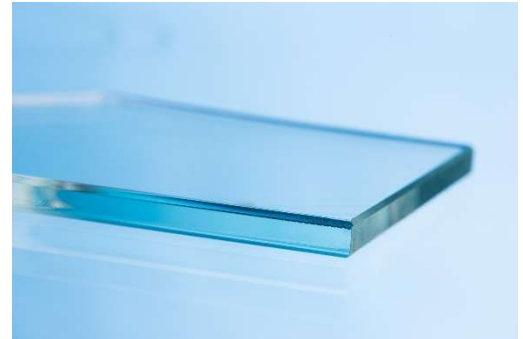
## 6. GLASS

### Tempered glass

Tempering is a heat treating that produces a pre-compression condition on glass surfaces; a reduction of micro blemishes is therefore achieved. After being tempered, glass develops a resistance that is four times higher than a traditional float glass. Another advantage is that, in case of breakage, you will have little fragments without sharp edges.

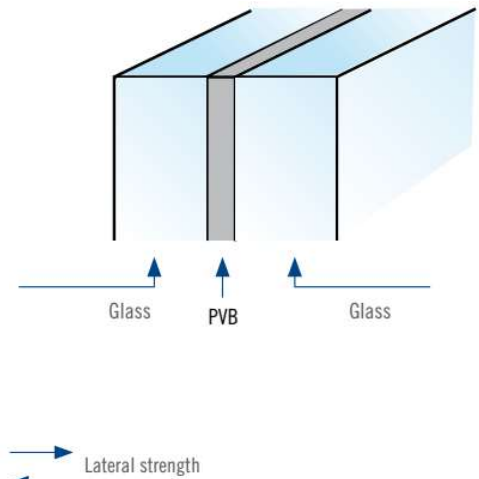
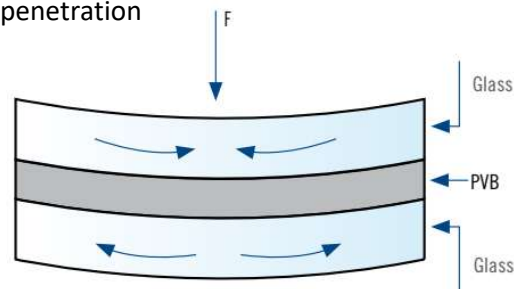
### Laminated glass

By joining two or more tempered glass layers and alternating them with a plastic sheet, we get a composite panel, where, in case of a break, fragments remain cohesive. Plastic materials which are usually in PVB or EVA, are interjected between two or more layers, thanks to specific processes that allow them to reach a composite panel with mechanical, heat and acoustic performances.

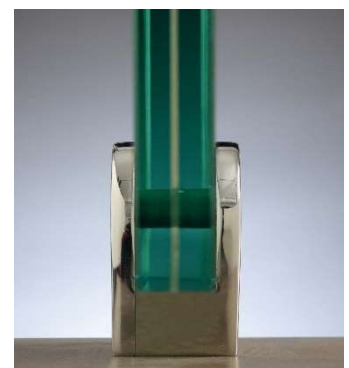


### Advantages of security stratified glass in case of breakage:

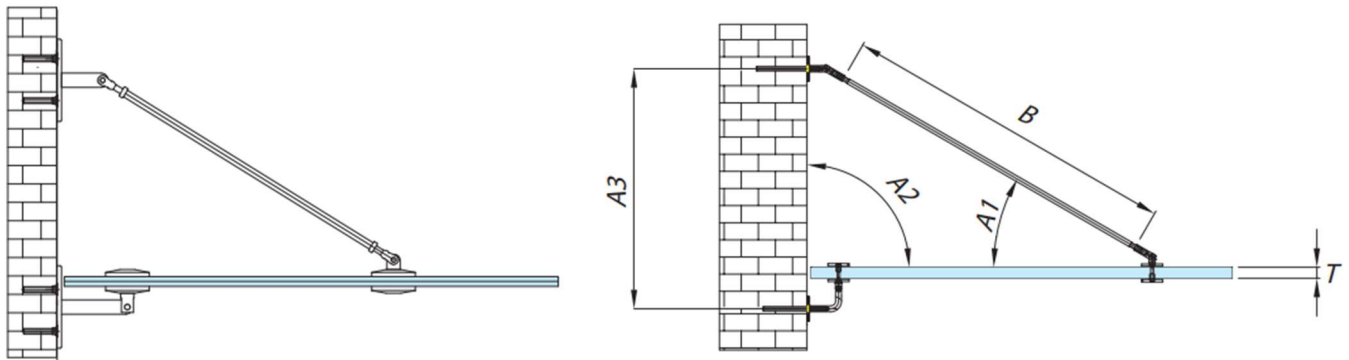
- Fragments and splinters pinned by plastic;
- It stands even after break and it can be replaced;
- Decreased fall of dangerous fragments on people;
- Decreased injury risk caused by human impact;
- Increased mechanical resistance to break – through and penetration



- from 17.52mm (88.4) to 25.52mm (1212.4) toughened laminated glass;
- optional coloured or tint glass;
- radius corners and polished edges on request;
- optional drilled holes;



## 8. INSTALLATION



### Important information for a proper installation

A1	A2	A3	A4	W	B
30°	90°	570mm	150mm	1000mm	775mm
28°	92°	545mm	150mm	1000mm	775mm
26°	94°	520mm	150mm	1000mm	775mm
24°	96°	495mm	150mm	1000mm	775mm
30°	90°	860mm"	300mm	1500mm	1350mm
28,5°	91,5°	825mm	300mm	1500mm	1350mm
27°	93°	790mm	300mm	1500mm	1350mm
25,5°	94,5°	755mm	300mm	1500mm	1350mm